

Asthma Surveillance in DC Emergency Departments

Stephen J. Teach, MD, MPH
Medical Director, IMPACT DC

Deborah Quint Shelef, MPH
Project Director, IMPACT DC

Children's National Medical Center, Washington, DC



Methods

- IMPACT DC Asthma Surveillance
 - ED visits and admissions only
 - All non-military DC hospitals
 - Data stratified by age and residential zip code

Methods

- Based on ICD-9 codes 493.xy
- Includes cases with primary, secondary, or tertiary diagnosis of asthma*
- Incidence, not prevalence data
- Visit level data, not patient level

*In 2008, data from Providence Hospital includes only cases with a primary diagnosis of asthma. Based on earlier submissions, we estimate that this under represents pediatric ED visits by 0.1%, adult visits by 1.3%, and senior visits by 3.5%, for 2008 only.

Methods

– Age Categories:

- Pediatric: 12m-17y
- Adults: 18-65y
- Seniors: >65y

– Pediatric age stratification:

- For comparison with CDC National Center for Health Statistics data:¹
0-4y, 5-10y, 11-17y
- For comparison with Healthy People 2010 data:²
0-4y, 5-14y

1. Akinbami, L.J., *The state of childhood asthma, United States, 1980-2005*. 2006, National Center for Health Statistics: Hyattsville, MD.

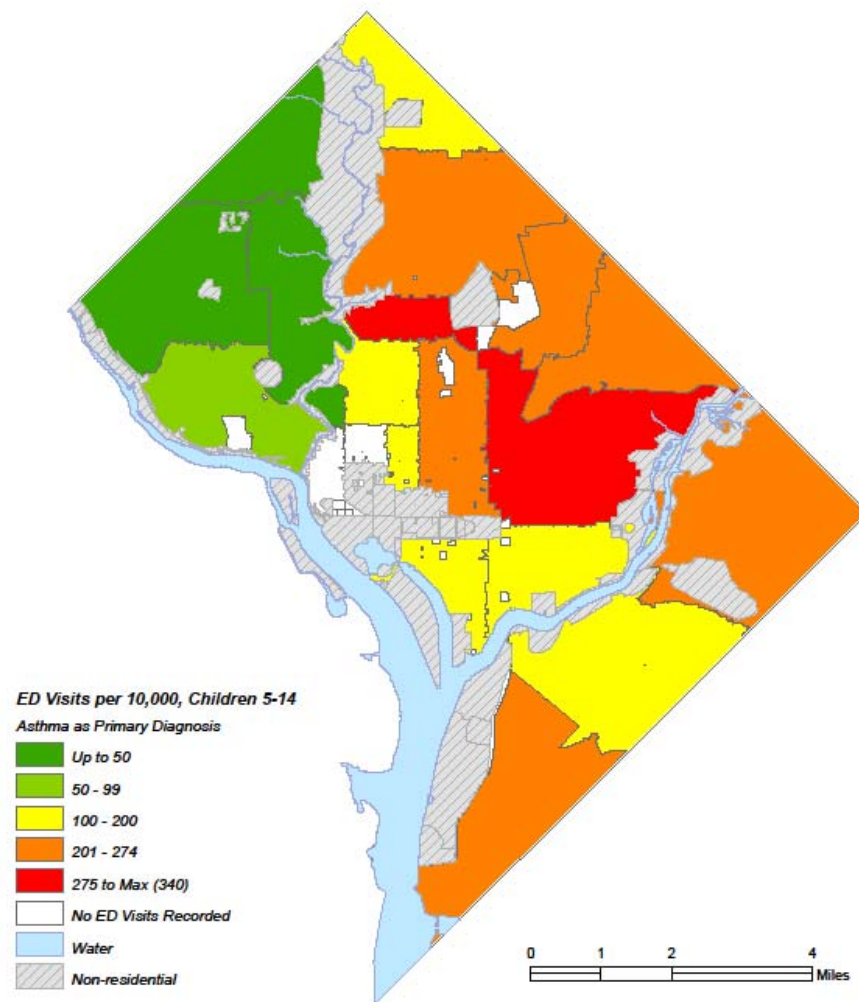
2. U.S. Department of Health and Human Services. *Healthy People 2010*. 2nd ed. With Understanding and Improving Health and Objectives for Improving Health. 2 vols. Washington, DC: U.S. Government Printing Office, November 2000.

Pediatric Data

Age 12 months – 17 Years

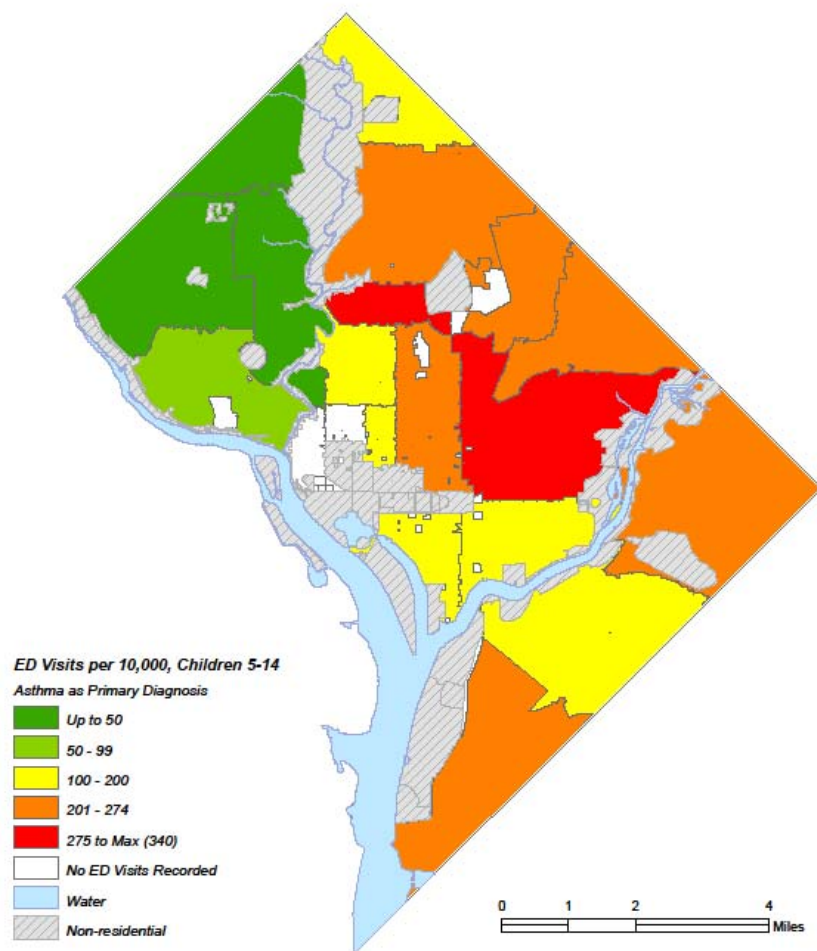
2002-2009

Visit Rate by Zip Code, 2006

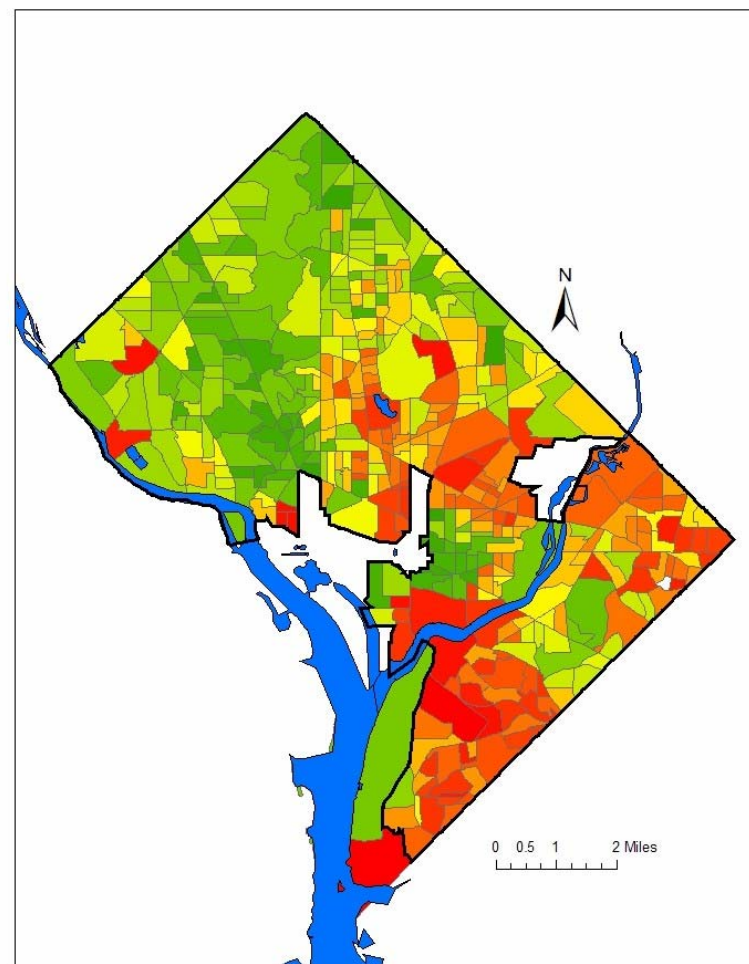


>10 fold Difference in Rate

Visit Rate by Zip Code, 2006



Poverty in DC, 2000



Pediatric ED Visits by DC Hospital

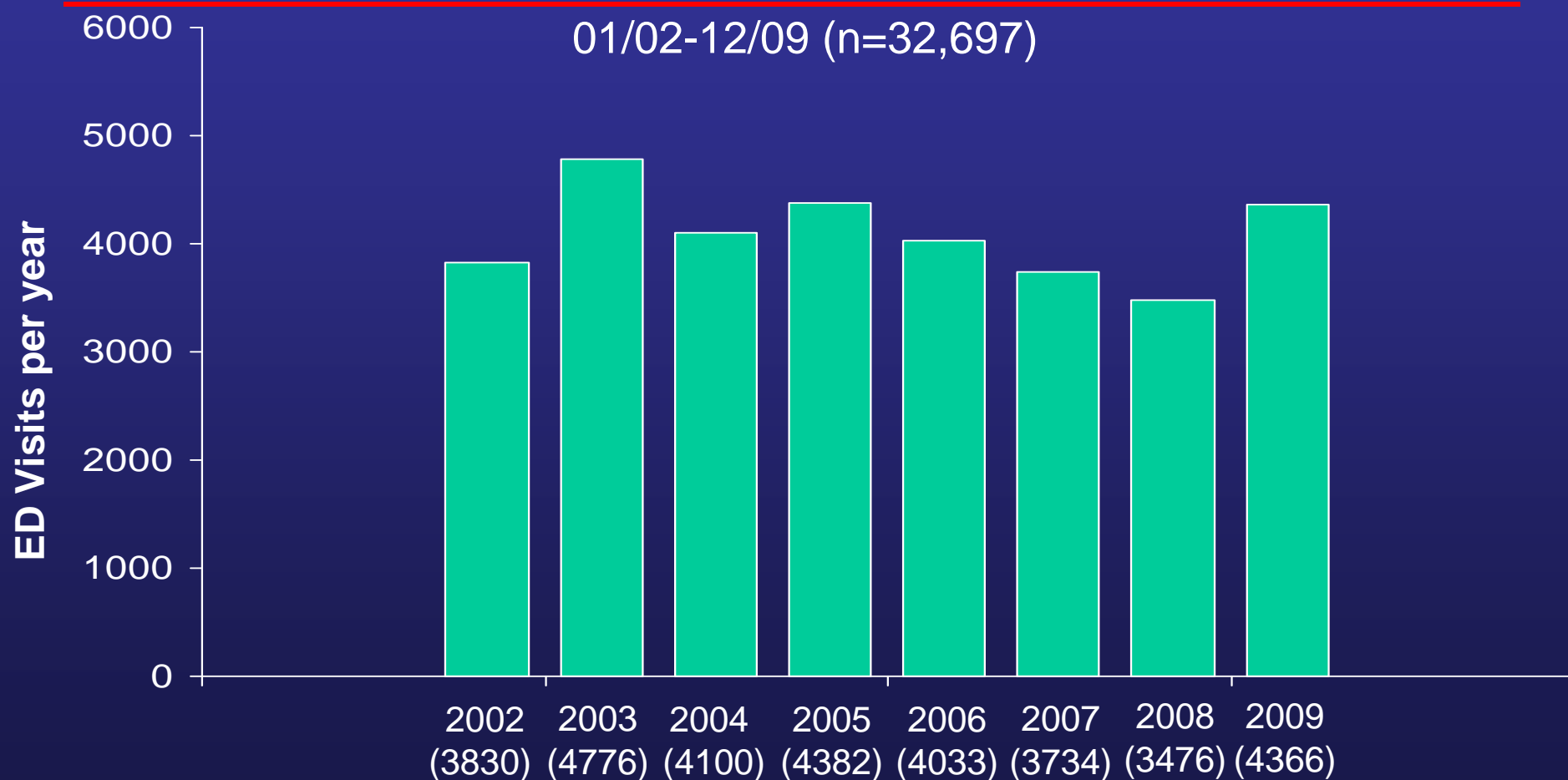
All Zip Codes, Ages 12 mo-17 y

01/02-12/09 (n=53,829)

Site	# of Visits	% of Visits
Children's	45,116	83.8
United Medical Center	2,789	5.2
Georgetown	2,289	4.3
Howard	2,069	3.8
Providence	435	0.8
Sibley Memorial	360	0.7
Wash Hospital Ctr	345	0.6
George Washington	296	0.6
DC General	130	0.3

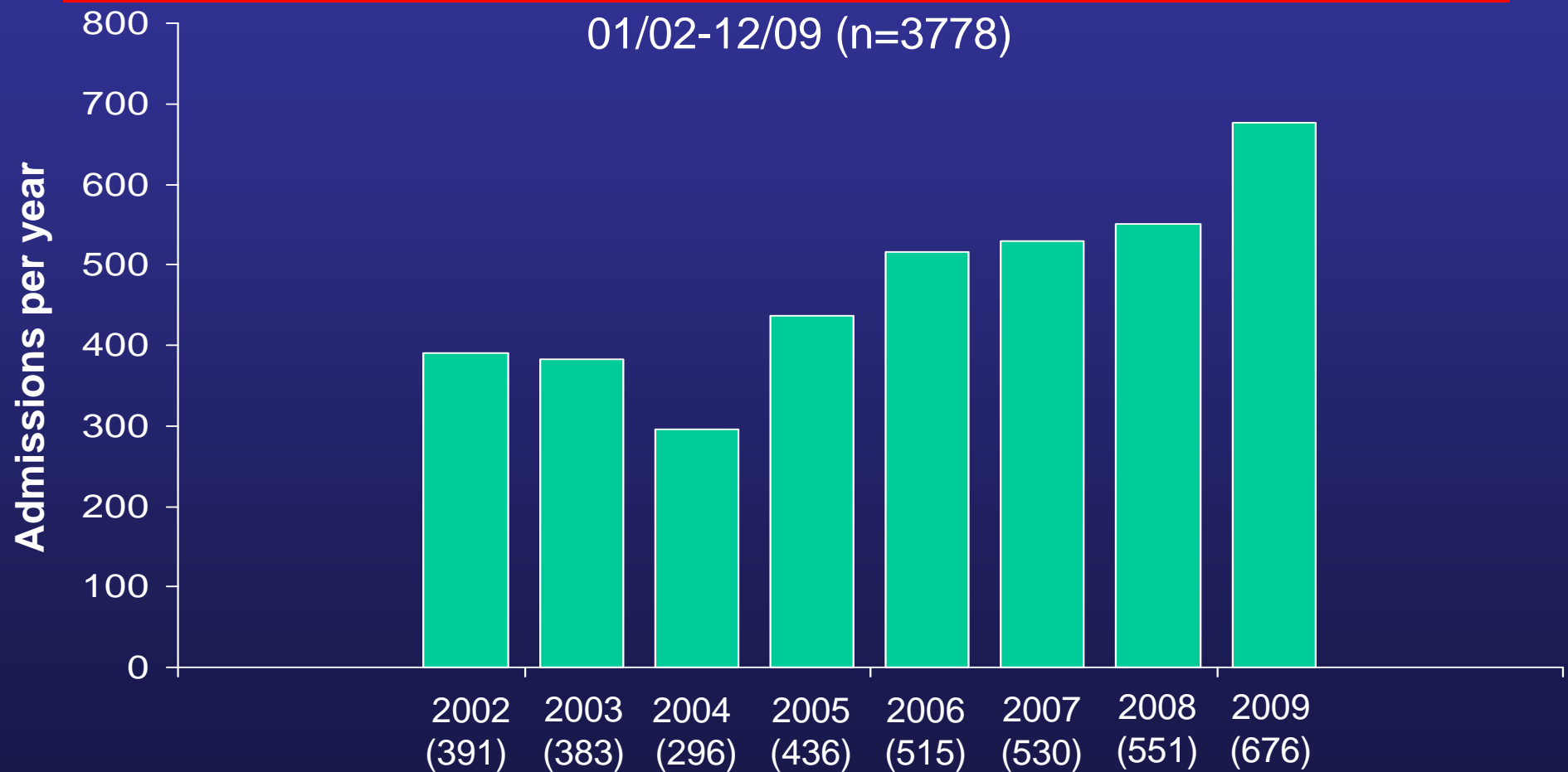
Pediatric ED Visits for Asthma

DC Zip Codes, Ages 12 mo-17 y



Pediatric Admissions for Asthma

DC Zip Codes, Ages 12 mo-17 y



Pediatric Admissions for Asthma

DC Zip Codes, Ages 12 mo-17 y

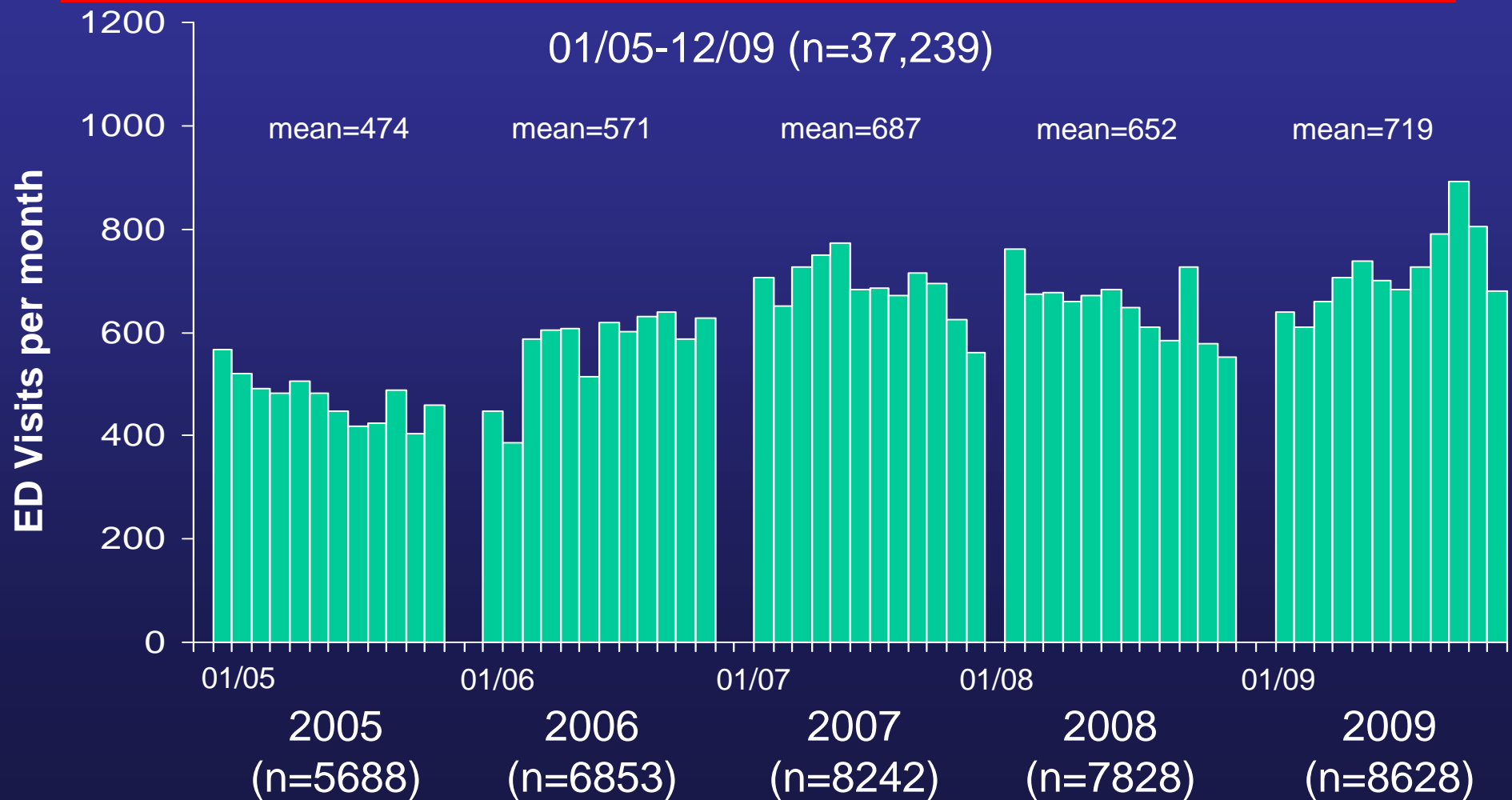
	ED Visits	Admissions	% Admitted
2002	3,830	391	10.2 %
2003	4,776	383	8.0 %
2004	4,100	296	7.2 %
2005	4,382	436	9.9 %
2006	4,033	515	12.8 %
2007	3,734	530	14.2 %
2008	3,476	551	15.9%
2009	4,366	676	15.5%
TOTAL	32,697	3778	11.6%

Adult Data
Age 18 – 65 Years
2005-2009

ED Visits for Asthma

2005-2009, DC Zip Codes

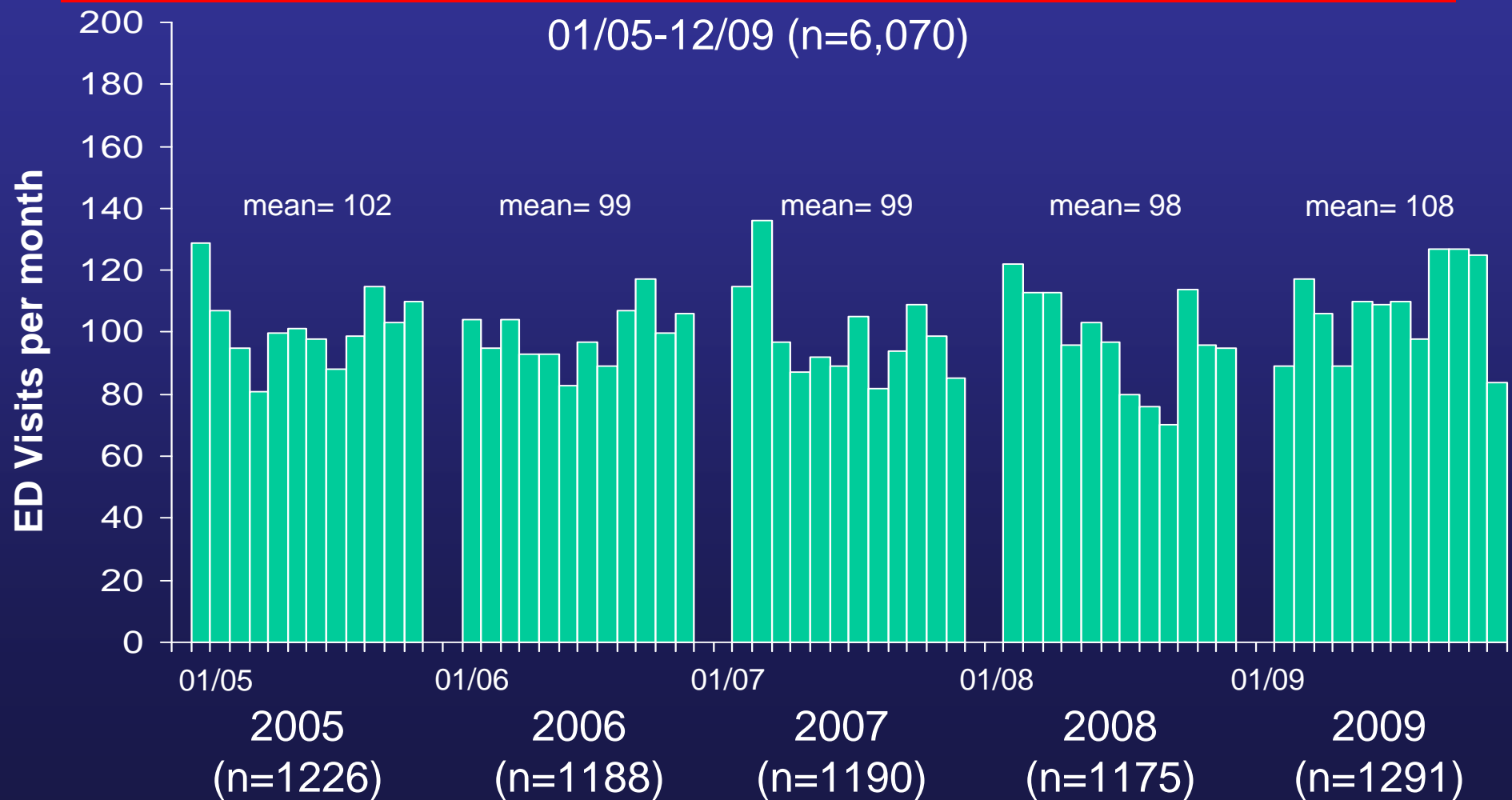
Adults, Age 18-65



Admissions for Asthma

2005-2009, DC Zip Codes

Adults, Age 18-65



ED Visits by DC Hospital

2005-2009, all Zip Codes

Adults, Age 18-65

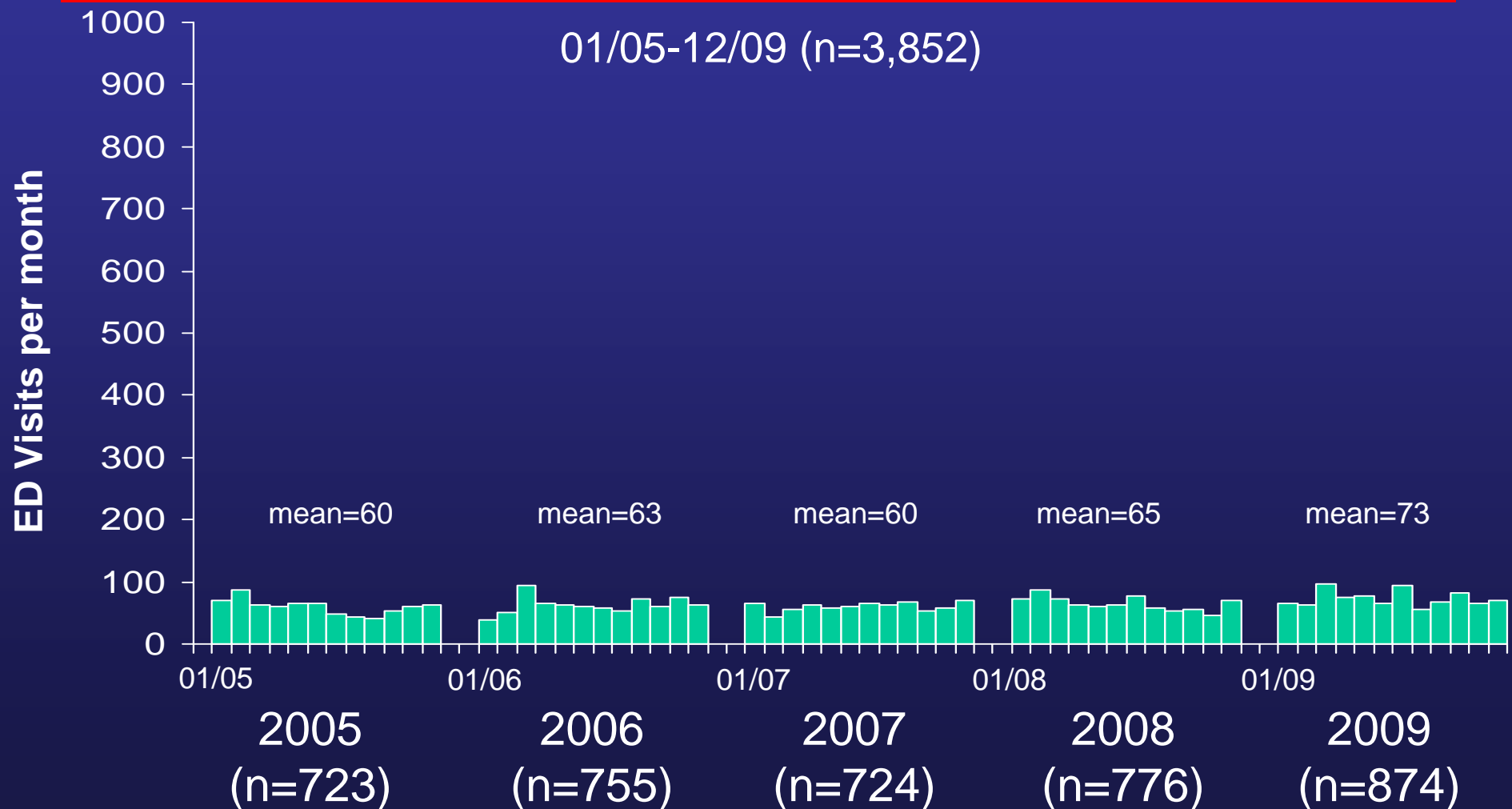
Site	# of ED Visits	% of Visits
Washington Hosp Cent	19,896	41.0
Howard	9,772	20.1
Georgetown	4,731	9.8
United Medical Center	4,395	9.1
Providence	4,036	8.3
George Washington	3,396	7.0
Sibley Memorial	1,646	3.4
Children's	652	1.3

Senior Data
Age >65 Years
2005-2009

ED Visits for Asthma

2005-2009, DC Zip Codes

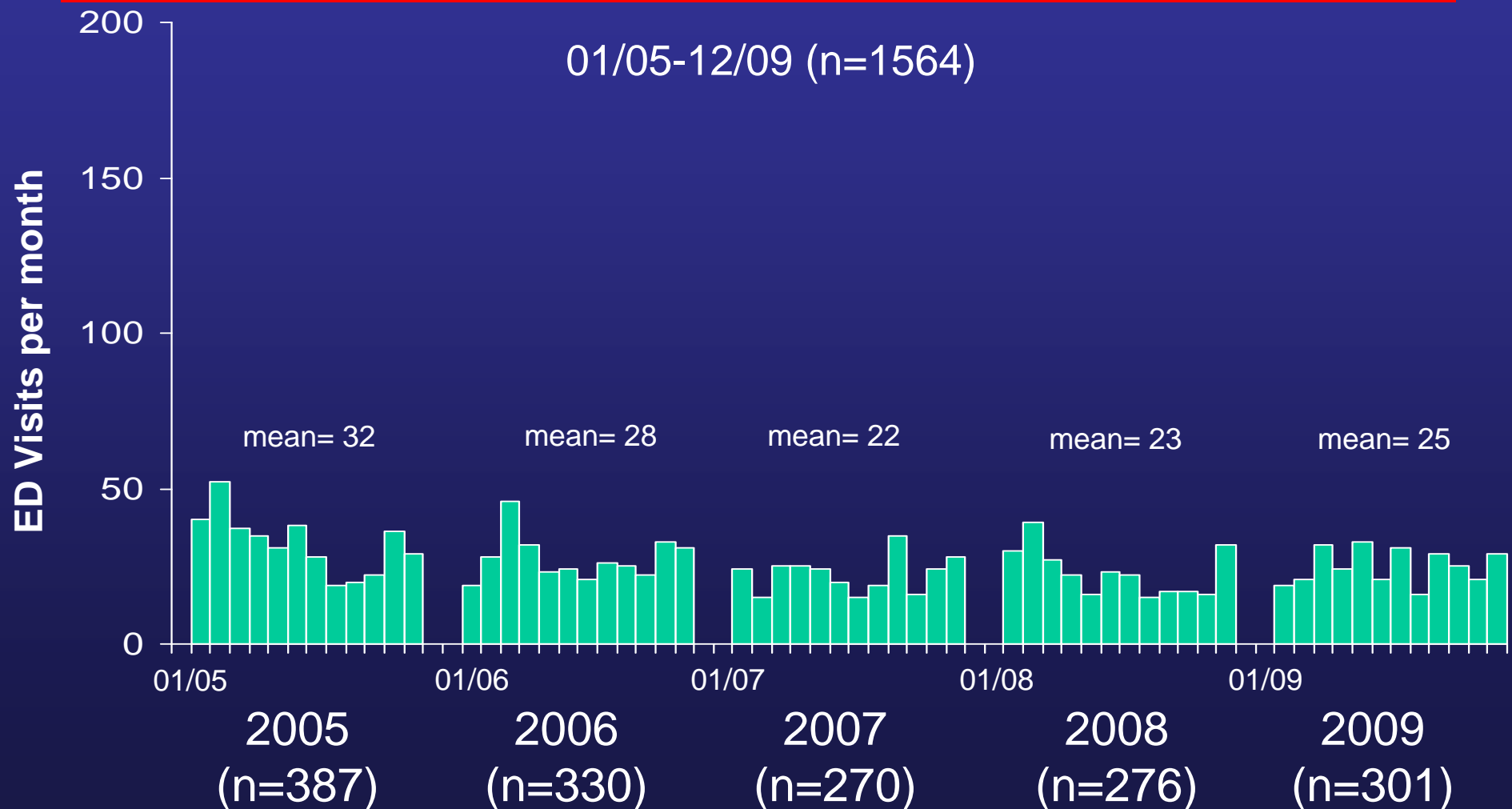
Seniors, Age >65



Admissions for Asthma

2005-2009, DC Zip Codes

Seniors, Age >65



ED Visits by DC Hospital

2005-2009, all Zip Codes

Seniors, Age >65

Site	# of ED Visits	% of Visits
Washington Hosp Cent	2316	47.0
Providence	749	15.2
Howard	534	10.9
Sibley Memorial	443	9.0
Georgetown	433	8.8
United Medical Center	255	5.2
George Washington	192	3.9
Children's	1	0.0

Thank you!