

Pediatric Neurology Update

Conference Chairs

Roger J. Packer, MD, Course Director, 25th Annual Pediatric Neurology Update
Senior Vice-President, Center for Neuroscience and Behavioral Medicine
Gilbert Family Distinguished Professor of Neurofibromatosis
Director, Gilbert Family Neurofibromatosis Institute
Director, Brain Tumor Institute
Professor of Neurology and Pediatrics

Steven Weinstein, MD, Co-Course Director, 25th Annual Pediatric Neurology Update
Medical Unit Director, Division of Neurology
Professor of Neurology and Pediatrics

Robert F. Keating, MD, Co-Course Director, 25th Annual Pediatric Neurology Update
Chief, Division of Neurosurgery
Professor of Neurosurgery and Pediatrics

Accreditation Statement

The Inova Office of Continuing Medical Education is accredited by the Medical Society of Virginia to provide continuing medical education for physicians.

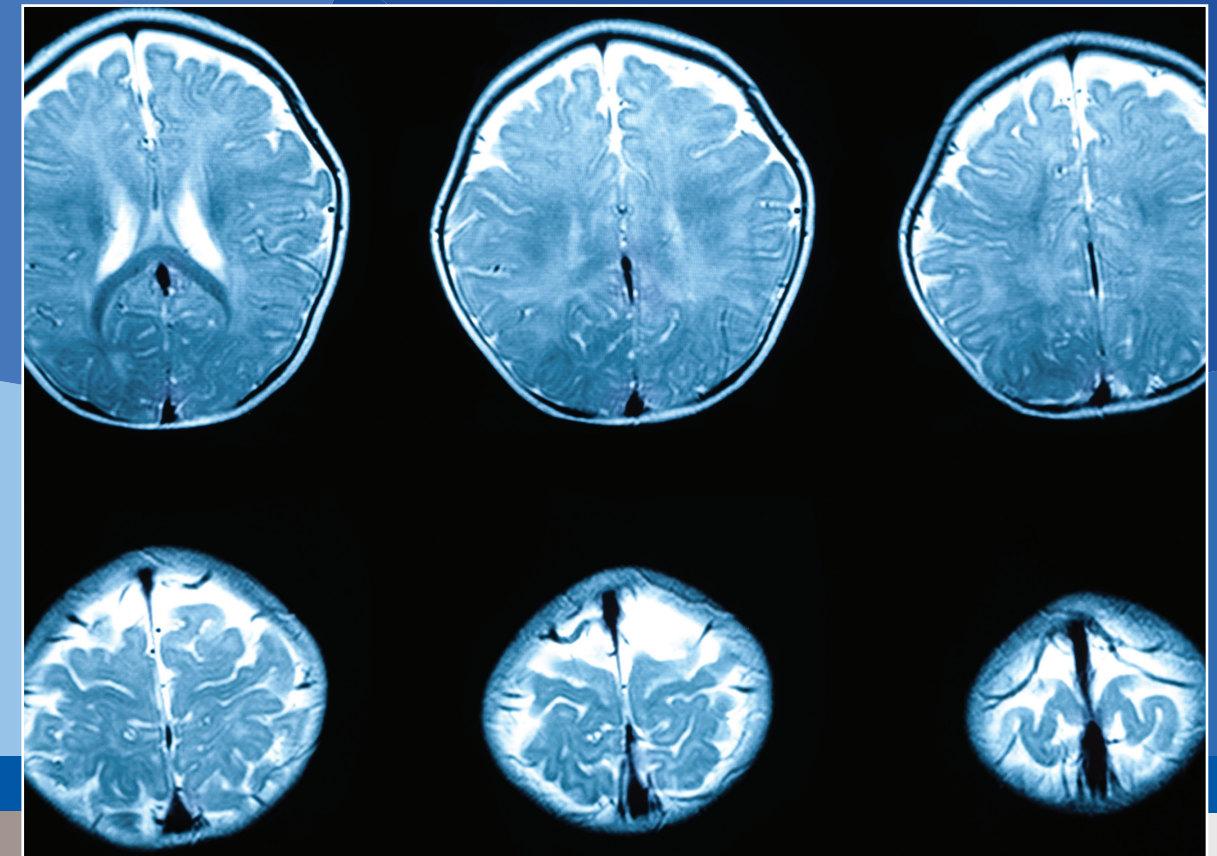
Credit Designation

The Office of Continuing Medical Education for Inova Health System designates this live activity for a maximum of 8.5 AMA PRA Category 1 Credit(s)[™]. Physicians should claim only the credit commensurate with the extent of their participation in the activity.

Physicians may claim up to 8.5 credits in Type 1 CME on the Virginia Board of Medicine Continued Competency and Assessment Form required for renewal of an active medical license in Virginia.

Faculty Disclosure

The Inova Office of Continuing Medical Education has implemented a policy to comply with the current Medical Society of Virginia Standards for Commercial Support requiring resolution of all faculty conflicts of interest. Faculty declaring a relevant commercial interest will be identified in the activity syllabus.



Pediatric Neurology Update

Wednesday, March 11, 2015

Sponsored by **Children's National Health System**

- Focusing on advances in the molecular understanding of childhood neurologic diseases and how these insights translate into therapeutic and preventative strategies
- Featuring Children's National and other internationally known experts, including Laura R. Ment, MD, the 2015 Richmond Paine Lecturer, and Alan R. Cohen, MD, the 2015 McCullough Lecturer

THE 2015 PEDIATRIC NEUROLOGY UPDATE is the 25th Annual Symposium coordinated by the **Center for Neuroscience and Behavioral Medicine at Children’s National**. Over the past 25 years, there has been a tremendous transition in pediatric neurologic care, with a greater understanding of the molecular drivers of pediatric neurologic diseases. This transition in understanding has led to remarkable advances in therapeutic and, most recently, precision molecularly targeted therapies; this year’s update will focus on these transitions and how they impact diagnosis, treatment, and outcome.

This year’s Richmond Paine Lecturer will be the internationally renowned pediatric neurologist **Laura R. Ment, MD**, from Yale University, who will be speaking on new concepts of the pathophysiology of neonatal brain injury and how they impact treatment. She will be followed by **Adré du Plessis, MBChB, MPH**, from Children’s National, who will address the field of fetology and how monitoring and early intervention may dramatically affect outcomes. This will be followed by **Joseph Scafidi, DO**, also from Children’s National, who will describe new molecular treatment of perinatal brain injury. Later in the morning session, the fields of neuro-immunology, the neuro-genetics of epilepsy, and neuro-oncology will be discussed by staff members from Children’s National, including **Roger J. Packer, MD**, who will describe the new molecular classifications of childhood brain tumors and how this changes therapeutic approaches.

Alan R. Cohen, MD, Chief of Pediatric Neurology at Boston Children’s Hospital, will be this year’s McCullough Lecturer. Dr. Cohen will discuss the importance of the doctor-patient relationship and the neurological history and examination in the current era of high technology computer-driven medicine.

The afternoon session will be a unique symposium on another type of transition; the transition of diagnosis and care of children with neurologic diseases as they enter adolescence and young adulthood. Staff from Children’s National will team with national experts in young adult care including **John Lynch, DO, MPH**, from NINDS, to discuss transitions in stroke, epilepsy, and neuromuscular disease care. The final session will be a unique roundtable with local, state, and governmental agencies, led by **Sandra Cushner-Weinstein**, Director of Social Services at Children’s National, on the challenges that children with neurologic conditions and their families face as they transition to adulthood and ways to access services and gain independence.



Target Audiences

This conference is intended for neurologists, neurosurgeons, pediatricians, neuropsychologists, nurses/ nurse practitioners, allied neuroscientists, and pediatric healthcare professionals.

Learning Objectives

- 1. Update the medical practitioner on new concepts of neonatal brain injury and how these concepts, in the years ahead, already have and will result in new therapeutic approaches.
- 2. Educate neurologists, pediatricians, and allied medical and healthcare workers in the new molecular concepts of the diagnosis and treatment of neuro-immunologic, neuro-genetic, and neuro-oncologic disease of childhood.
- 3. Update medical practitioners in the neurologic conditions adolescents and young adults face, many of which are the ongoing manifestations of illnesses which first began in childhood.

25th Annual

Pediatric Neurology Update

Wednesday, March 11, 2015

LOCATION	Children’s National Health System (Auditorium) 111 Michigan Ave NW, Washington, DC 20010
REGISTRATION	Fellow: \$65 Allied Health Professional: \$75 Physician: \$125 To register, visit www.ChildrensNational.org/NeurologyUpdate

AGENDA

7:45-8:00	Introduction	Roger J. Packer, MD, <i>Children’s National</i>
-----------	--------------	---

Neonatal and Fetal Neurology (Moderator: R. Packer)

Richmond Paine Lecture		
8:00-9:00	Talk to Your Baby: Language Outcomes in the Prematurely-born	Laura R. Ment, MD, <i>Yale University</i>
9:00-9:30	Molecular Approaches to the Treatment of Neonatal Brain Insults	Joseph Scafidi, DO, <i>Children’s National</i>
9:30-10:00	The High-risk Fetal Brain: Running the Rapids of Complicated Transition	Adré du Plessis, MD, <i>Children’s National</i>
10:00-10:15	Roundtable	
10:15-10:30	Break	

Neuro-Genetics and Neuro-Immunology (Moderators: A. Gropman, D. Cabacar)

10:30-11:00	Neuro-immunology: Molecular Advances and Translations to Therapy	Elizabeth Wells, MD, <i>Children’s National</i>
11:00-11:30	Neuro-genetics of Epilepsy: Clinical Implications	John Schreiber, MD, <i>Children’s National</i>
11:30-12:00	Molecular Genetics of Childhood Brain Tumors: Translational Implications	Roger J. Packer, MD, <i>Children’s National</i>
McCullough Lecture		
12:00-1:00	Introduction The Lost Art of Localization	Robert F. Keating, MD, <i>Children’s National</i> Alan R. Cohen, MD, <i>Boston Children’s Hospital</i>
1:00-1:40	Lunch	

Transitions (Moderators: S. Weinstein, W. McClintock)

1:40-2:20	Epilepsy	William D. Gaillard, MD, <i>Children’s National</i> Mohamed Koubeissi, MD, <i>George Washington University</i>
2:20-3:00	Transition Care for Neuromuscular Disorders	Mathula Thangarajh, MD, PhD, <i>Children’s National</i> Annie Kennedy, <i>Muscular Dystrophy Association</i>
3:00-3:40	Pediatric Stroke	Jessica Carpenter, MD, <i>Children’s National</i> John K. Lynch, DO, <i>National Institutes of Health</i>
3:45-5:15	Roundtable Discussion: Challenges of Care for Patients With Neurologic Diseases and Those with Developmental Disabilities as They Transition to Adulthood	Sandy Cushner-Weinstein, PT, LICSW, LCSW-C, <i>Children’s National</i> Sinan Turnacioglu, MD, <i>Children’s National</i>